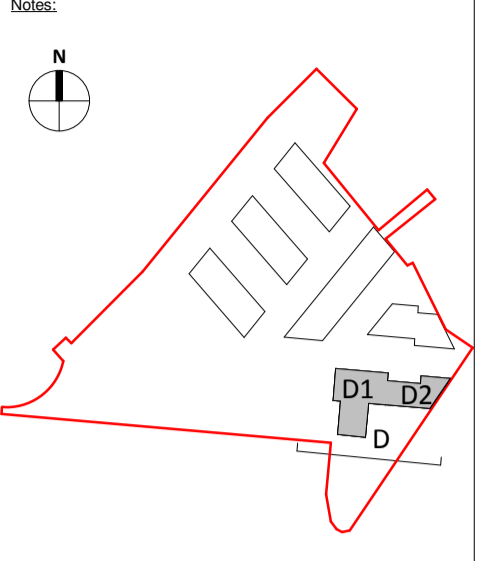


Copyright and ownership of this drawing is vested in RKD Architects, whose prior written consent is required for its use, reproduction or for publication to any third party. All rights reserved by the law of copyright and by international copyright conventions are reserved to RKD Architects and may be protected by court proceedings for damages and/or injunctions and costs. RKD Architects' Quality Management Systems are certified to ISO 9001:2015.



Site Boundary

Notes:
 All levels shown are to the Irish Transverse Mercator (ITM) and are displayed in meters (m). All levels shown relate to the Malin Head datum. All dimensions shown in millimeters (mm).
 Symbol indicates top of floor level and relates to Malin Head datum

MATERIAL FINISHES

BR1	GREY STONE - ORIGINAL WALL
BR2	LIGHT GREY RIBBED BRICKWORK
BR3	RED BRICKWORK
BR4	RED RIBBED BRICKWORK
BR5	GREY BRICKWORK
BR6	GREY RIBBED BRICKWORK
BR7	DARK BROWN BRICKWORK
BR8	DARK BROWN RIBBED BRICKWORK
BR9	BUFF BRICKWORK

METAL CLADDING

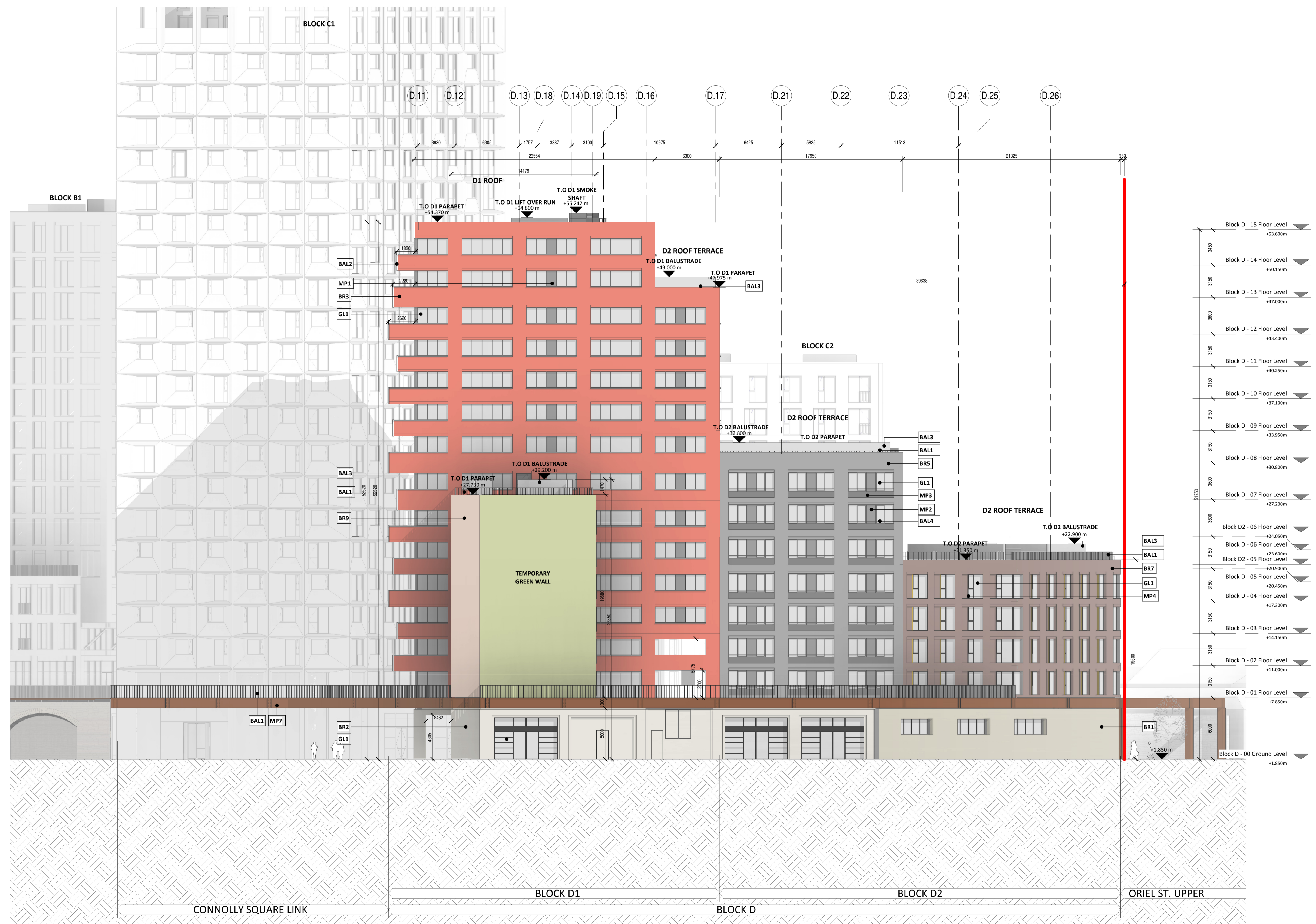
MP1	DARK GREY METAL PANEL
MP2	GREY METAL PANEL
MP3	DARK GREY STRETCHED METAL PANEL
MP4	BUFF STEEL LAMELLA
MP5	DARK GREY CORNER WINDOW PANEL
MP6	WHITE PERFORATED METAL PANEL
MP7	RED CORTEN STEEL HIGHLIGHT

GLAZING

GL1	WINDOW GLAZING SYSTEM
GL2	CURTAIN WALL GLAZING SYSTEM

BALUSTRADE

BAL1	STEEL / CORTEN HIGHLIGHT BALUSTRADE
BAL2	WHITE STEEL BALCONY BALUSTRADE
BAL3	GLAZED SCREEN - TERRACE
BAL4	GREY RAILING



1 BLOCK D - SOUTH ELEVATION
1 : 200

Rev.	Date	Description
A	OCT 2019	Issued for Planning Application Submission

STATUS: **PLANNING**

PROJECT: The Connolly Quarter

PROJECT ADDRESS: Lands to the Rear of Connolly Station, Dublin 1

DWG TITLE: BLOCK D SOUTH ELEVATION

DWG NO.: 18135-ARROW-D-ZZ-DR-A-1301

REV.	PROJECT NO.	SCALE
A	18135	1 : 200

DATE	JUN 19	DRN	ILA	CHK	UR
------	--------	-----	-----	-----	----

RKD

59 Northumberland Rd
 Ballsbridge, Dublin 4
 D04 W P86, Ireland

+353 1 668 1055
 info@rkd.ie
 rkd.ie

ARROW

Nørre Farimagsgade 13, 4th fl.
 DK-1364 Copenhagen K
 Denmark

+45 4226 2860
 info@arrowarchitects.com
 www.arrowarchitects.com